

■ Subway

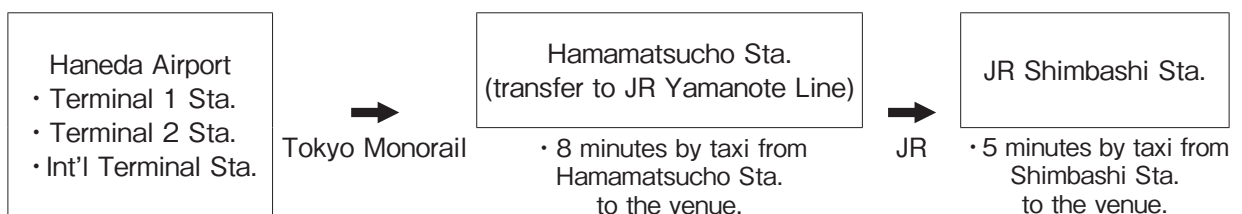
Line	Station	Exit	Access
Toei Subways			
Toei Mita Line	Onarimon Sta.	Exit A5	Approx. 3 minutes on foot
	Uchisaiwaicho Sta.	Exit A3	Approx. 10 minutes on foot
Toei Asakusa Line	Shimbashi Sta.	Exit 8	Approx. 12 minutes on foot
Toei Asakusa Line, Toei Oedo Line	Daimon Sta.	Exit A2	Approx. 13 minutes on foot
Tokyo Metro			
Hibiya Line	Kamiyacho Sta.	Exit 3	Approx. 7 minutes on foot
Ginza Line	Toranomon Sta.	Exit 1	Approx. 10 minutes on foot
	Shimbashi Sta.	Exit 8	Approx. 12 minutes on foot
Marunouchi Line, Chiyoda Line	Kasumigaseki Sta.	Exit C3	Approx. 13 minutes on foot

■ Train (JR)

- 12 minutes on foot from JR Shimbashi Station. (5 minutes by taxi)
- 15 minutes on foot from JR Hamamatsucho Station. (8 minutes by taxi)
- 12 minutes by taxi from JR Tokyo Station.

■ From Haneda Airport

By Tokyo Monorail

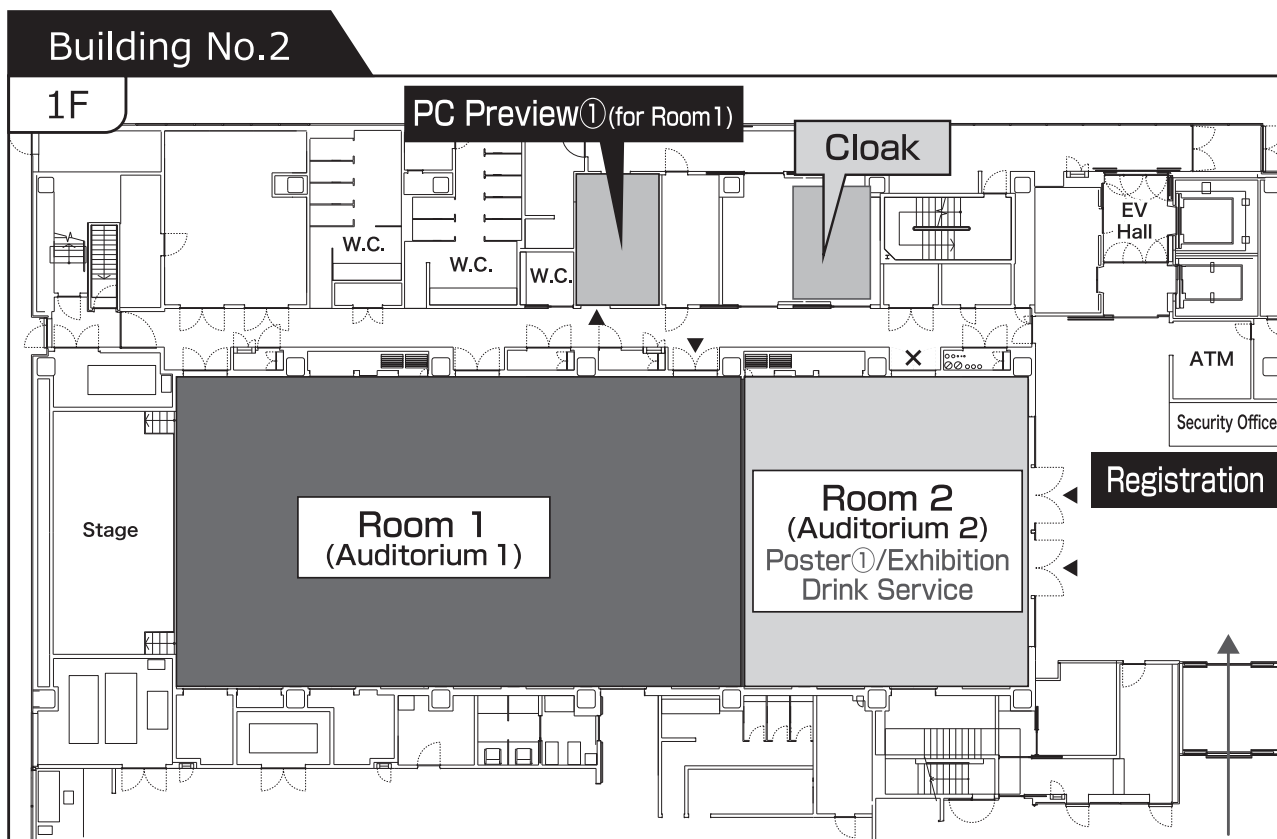


By Train (Keikyu Line & Toei Mita Line)



■ From Narita Airport

- By Train** Approx. 80 minutes to Daimon Station, Toei Asakusa Line (via Narita Sky Access Line, Keisei Line, Toei Asakusa Line)
- By Car** Approx. 90 minutes by taxi during off-peak hours (Express highway, via Shibakoen Ramp)
- By Bus** Approx. 120 minutes by Airport Limousine Bus (bound for Shiba area)

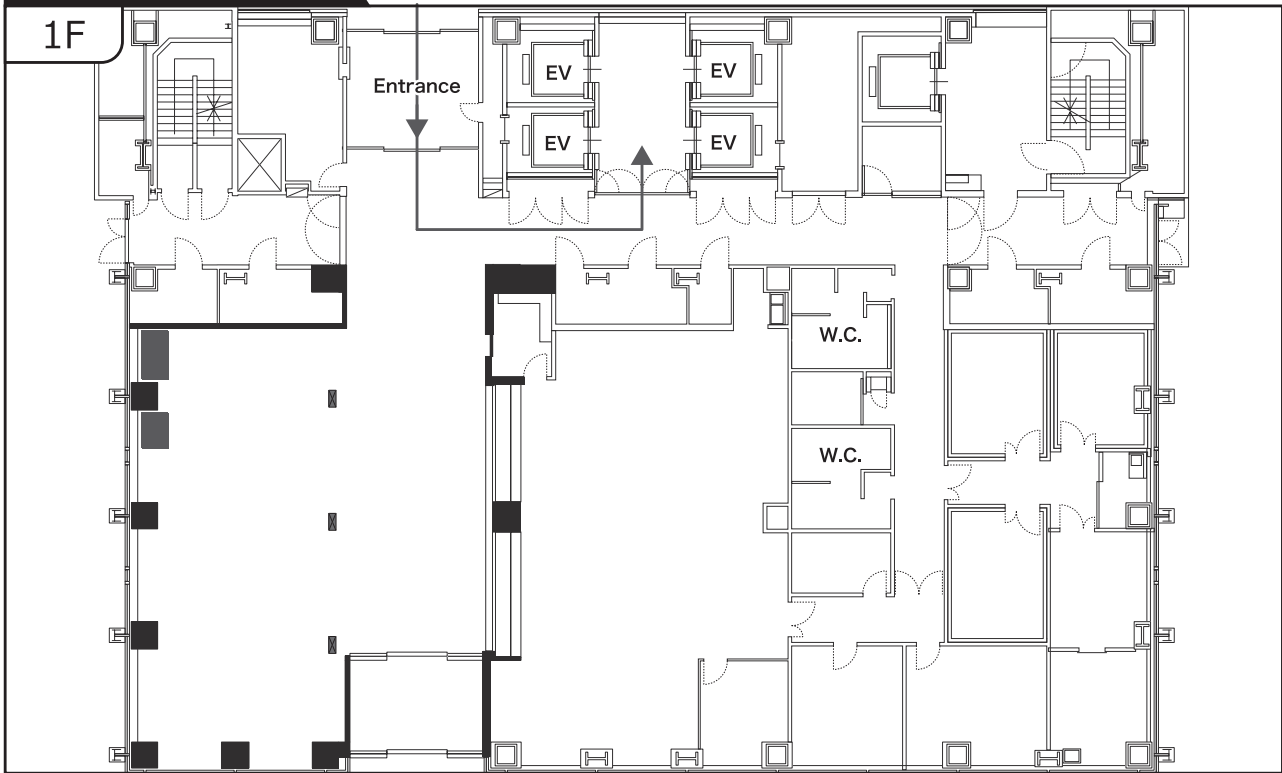


Building No.2
(Other Rooms)

Room 9	1001 / 10F, Bldg. No.2
Meeting Room 1	901 / 9F, Bldg. No.2
Meeting Room 2	801 / 8F, Bldg. No.2
Meeting Room 3	802 / 8F, Bldg. No.2
Meeting Room 4	803 / 8F, Bldg. No.2

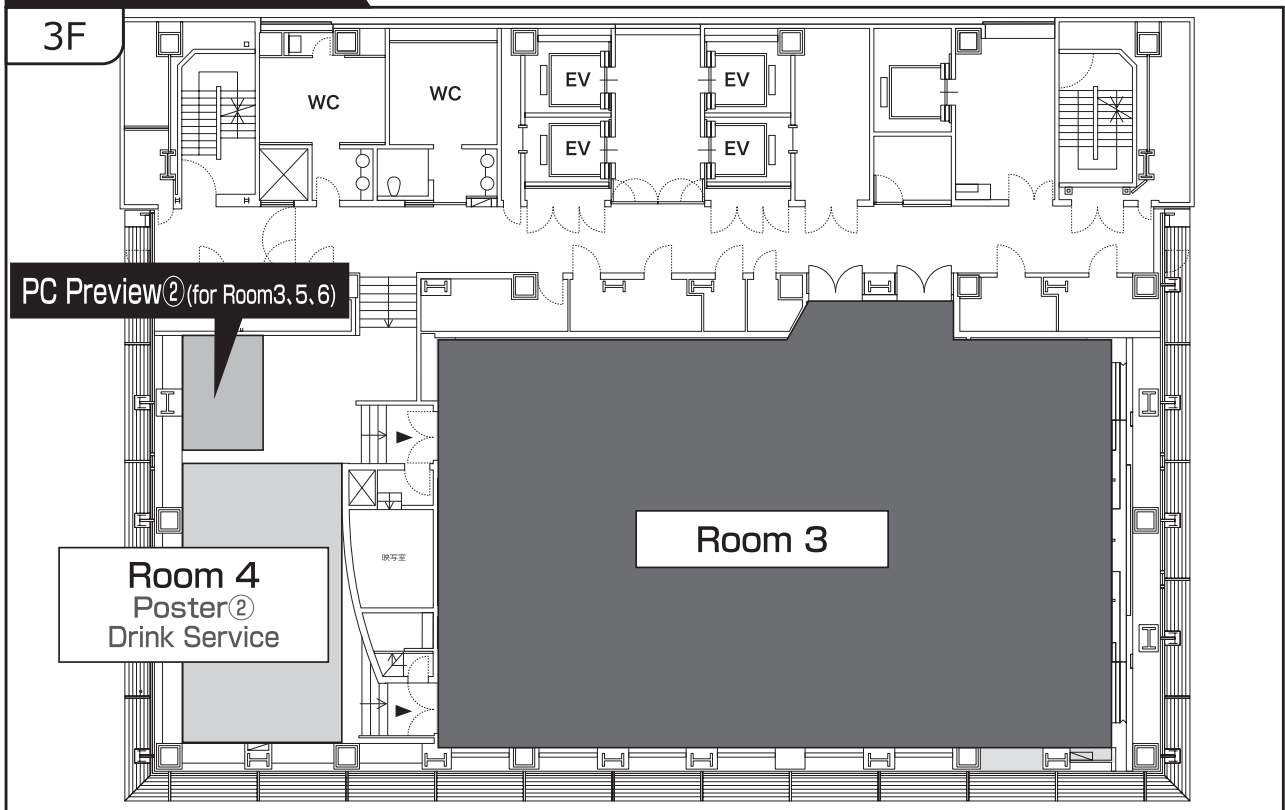
Building No.1

1F



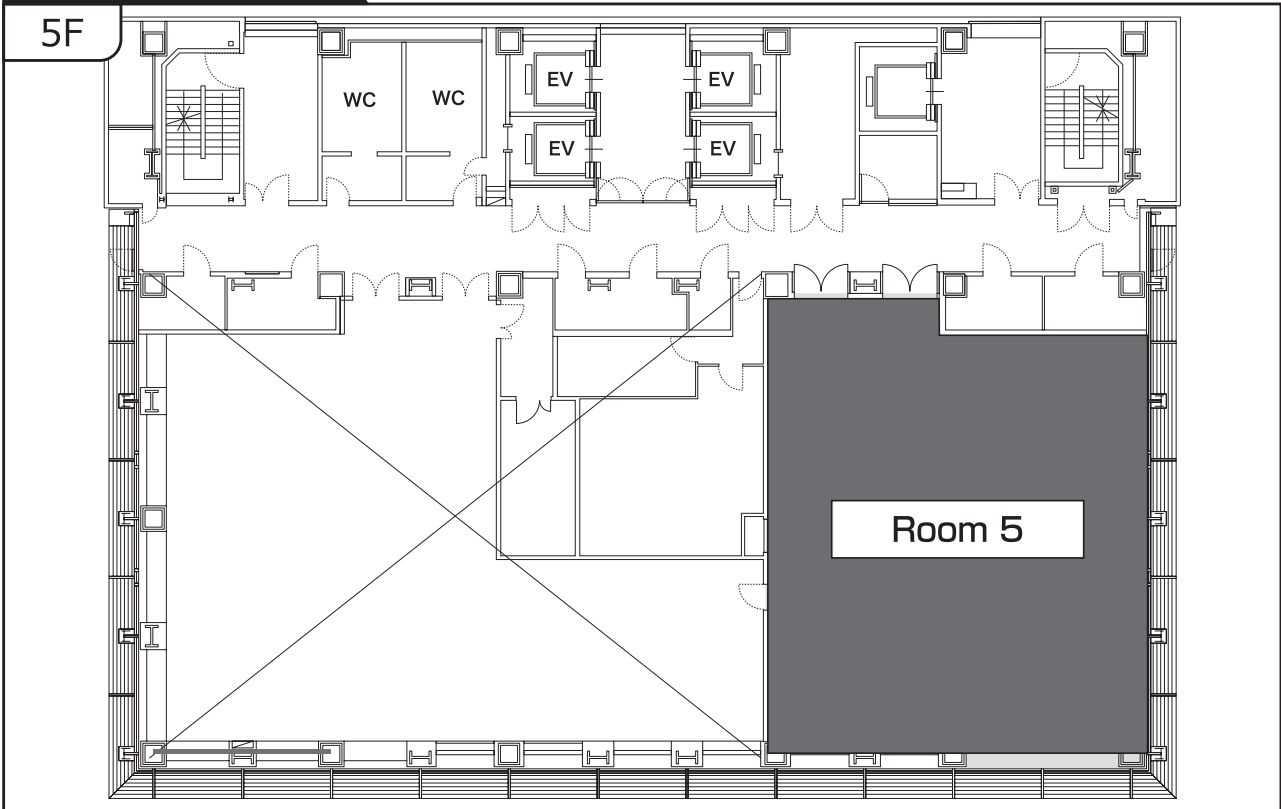
Building No.1

3F



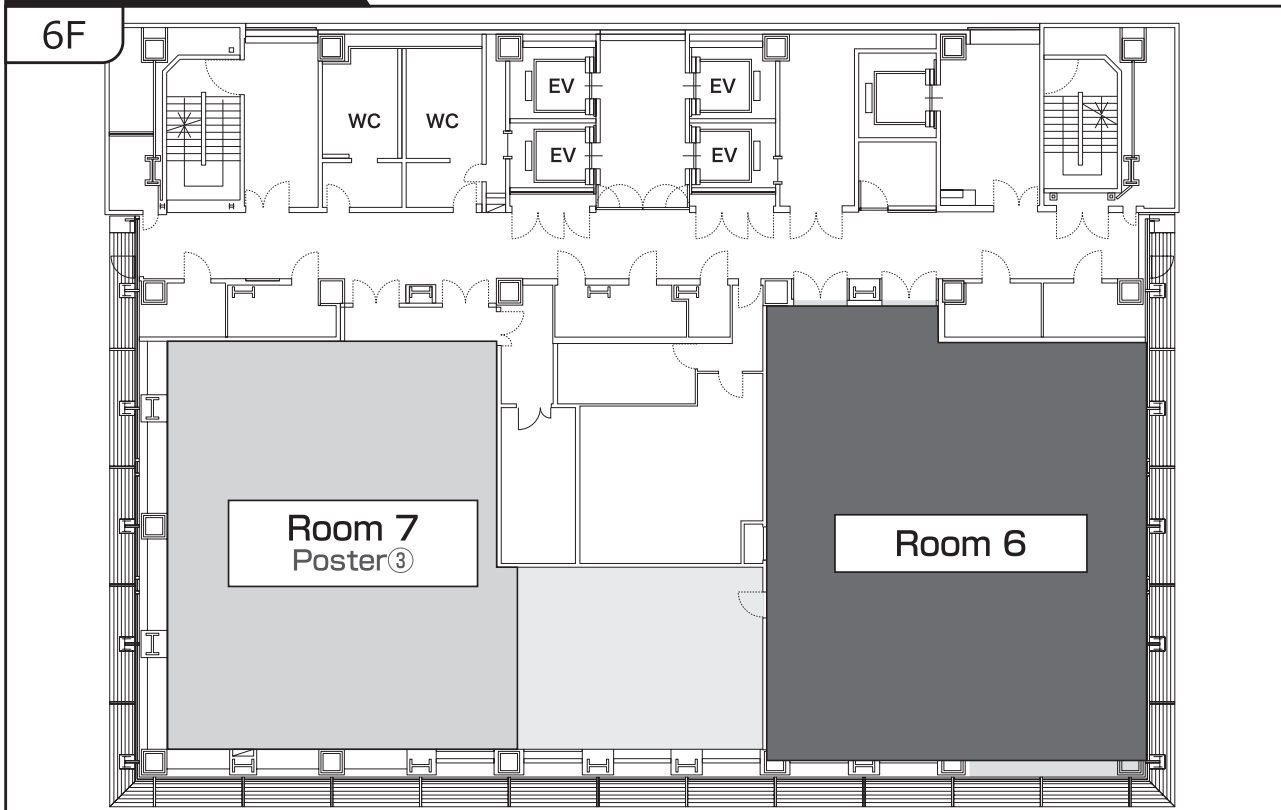
Building No.1

5F



Building No.1

6F



Building No.1

7F

